

**MECHANICAL DEMO FLOOR PLAN**  
SCALE: 1/8" = 1'-0"

**MECHANICAL NOTES:**

- 1 EXISTING 80% EFFICIENT FURNACE TO BE REPLACED WITH NEW 95% EFFICIENT FURNACE. DISCONNECT EXISTING CONDENSATE DRAIN, DUCTWORK, AND WIRING IN PREPARATION OF INSTALL NEW. REMOVE AND DISPOSE OF EXISTING GAS BRANCH LINE IN PREPARATION OF INSTALLING NEW. FIELD VERIFY EXISTING CONDITIONS PRIOR TO CONSTRUCTION. MAINTAIN EXISTING OUTSIDE AIR DAMPER & DUCTWORK.
- 2 THIS CONDENSING UNIT HAS BEEN VANDALIZED AND HAS ALREADY BEEN REMOVED IN ITS ENTIRETY. UNIT INDICATED ON PLANS FOR CONTRACTOR REFERENCE. CONTRACTOR TO FIELD VERIFY EXISTING CONDITIONS DURING THE PRE-BID WALK THROUGH.
- 3 THIS CONDENSING UNIT HAS BEEN VANDALIZED. CONTRACTOR TO REMOVE AND DISPOSE OF WHAT REMAINS IN ITS ENTIRETY. CONTRACTOR TO FIELD VERIFY EXISTING CONDITIONS DURING THE PRE-BID WALK THROUGH.
- 4 SEE CONTRACTOR OPTION ON THIS SHEET. IF EXISTING REFRIGERANT LINES ARE DEEMED TO NOT BE RE-USABLE. CONTRACTOR TO REMOVE AND DISPOSE OF ACCESSIBLE LINES IN PREPARATION OF RUNNING NEW.
- 5 CONTRACTOR TO REMOVE AND DISPOSE OF ANY EXISTING ACCESSIBLE REFRIGERANT LINES FOR THIS UNIT. CAP AND ABANDON IN-ACCESSIBLE LINES.
- 6 THIS UNIT TO REMAIN. PROTECT DURING CONSTRUCTION.
- 7 EXISTING WATER HEATER TO REMAIN. PROTECT DURING CONSTRUCTION.
- 8 THIS FLUE THRU ROOF AND CORRESPONDING BRANCH FLUES TO BE REMOVED IN ITS ENTIRETY IN PREPARATION OF INSTALLING NEW CONCENTRIC ROOF VENTS.
- 9 REMOVE, CAP, AND ABANDON EXISTING FLUE IN MECHANICAL ROOM AS HIGH AS POSSIBLE FOR DEMOED FURNACE.
- 10 THIS EXISTING SPLIT SYSTEM AND PTAC TO REMAIN. PROTECT DURING CONSTRUCTION.
- 11 THIS EXISTING UNIT VENTILATOR AND THRU THE WALL HEATERS TO BE REMOVED AND DISPOSED OF. SEE ARCHITECTURAL DRAWINGS FOR PATCH & REPAIR.
- 12 THIS EXISTING SPLIT SYSTEM TO BE REMOVED AND DISPOSED OF. CAP AND ABANDON IN-ACCESSIBLE CONDENSATE AND REFRIGERANT LINES.
- 13 REMOVE AND DISPOSE OF EXISTING CONTROL SYSTEM IN PREPARATION OF INSTALLING NEW. FIELD VERIFY EXISTING CONDITIONS.
- 14 SEE LARGE SCALE PLANS ON SHEET ME102 FOR MEZZANINE PLANS.
- 15 THIS CONDENSING UNIT TO BE REMOVED, RE-LOCATED AND REPLACED WITH NEW. REMOVE AND DISPOSE OF ACCESSIBLE REFRIGERANT LINES. CAP AND ABANDON IN-ACCESSIBLE LINES. COORDINATE WITH THE GENERAL CONTRACTOR FOR THE REQUIRED PATCHING.

**ELEC. PLAN NOTES:**

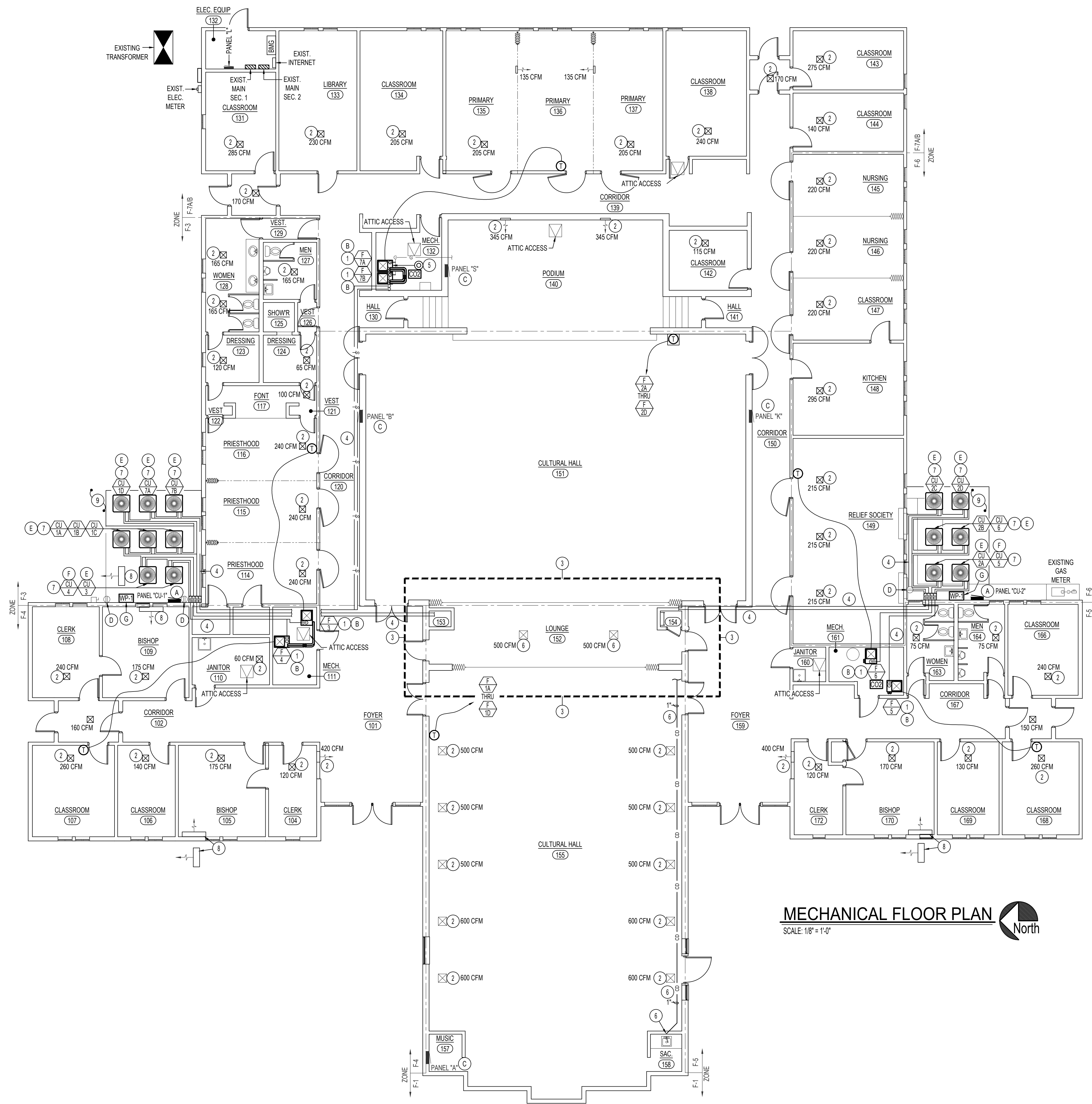
- A REMOVE EXISTING DISCONNECTS, AND PREPARE FOR NEW PANEL TO BE INSTALLED IN THIS AREA. PULL BACK CONDUCTORS TO EXISTING PANEL AND RE-LABEL INDEX.
- B REMOVE EXISTING DISCONNECT AND PULL BACK CONDUCTORS TO EXISTING PANEL. RE-LABEL INDEX.
- C EXISTING DISCONNECTS TO REMAIN.
- D DISCONNECT POWER FROM EXISTING FURNACES BEING REMOVED BY MECHANICAL. SEE SHEET ME101 FOR RECONNECTION.
- E DISCONNECT POWER FROM EXISTING AIR CONDITIONERS BEING REMOVED BY MECHANICAL. PULL BACK CONDUCTORS TO EXISTING PANEL AND RE-LABEL INDEX.
- F EXISTING GFCI RECEPTACLE TO REMAIN. PROTECT DURING CONSTRUCTION. INSTALL NEW IN-USE COVER.

Release Date:	XXXXX
Project Name:	<b>P.C. ARCHITECTS INC.</b> Dennis B. Patten, AIA P.O. Box 217 St. George, UT 84771 (435) 673-6579
Stamp:	<b>MURRAY MEETINGHOUSE</b> <b>HVAC REFURBISHING</b> 1705 NORTH MURRAY BLVD. COLORADO SPRINGS, CO.
Project for:	<b>THE CHURCH OF JESUS CHRIST</b> <b>OF LATTER-DAY SAINTS</b>
Project Number:	PCA-2325
Plan Series:	
Property Number:	503-4760-23020101
Sheet Title:	MECHANICAL DEMO FLOOR PLAN
Sheet:	<b>ME100</b>

**Dwight C. Sudweeks**  
REGISTERED PROFESSIONAL ENGINEER  
STATE OF COLORADO

**Engineered Systems Associates**  
1355 EAST CENTER  
POCATELLO, IDAHO 83201  
PHONE: (208) 233-0501  
FAX: (208) 233-0529  
EMAIL: esa@engsystems.com  
ESA JOB NUMBER: 23051

May 23, 2023



**MECHANICAL FLOOR PLAN**  
 SCALE: 1/8" = 1'-0"

**MECHANICAL NOTES:**

- 1 EXISTING 80% EFFICIENT FURNACE TO BE REPLACED WITH NEW 95% EFFICIENT FURNACE. PROVIDE AND INSTALL NEW CONCENTRIC VENT THRU ROOF AS INDICATED ON PLANS AND DETAILS. PROVIDE AND INSTALL NEW GAS CONNECTION. RE-CONNECT AND MODIFY EXISTING CONDENSATE DRAIN, DUCTWORK, AND WIRING FOR NEW INSTALL. FIELD VERIFY EXISTING CONDITIONS PRIOR TO CONSTRUCTION. MAINTAIN OUTSIDE AIR DAMPER & DUCTWORK.
- 2 BALANCE DIFFUSER/REGISTER TO CFM AS INDICATED ON PLANS.
- 3 SEE LARGE SCALE PLANS ON SHEET ME102 FOR MEZZANINE PLANS.
- 4 RISE NEW REFRIGERANT UP THRU ROOF OVERHANG. ROUTE NEW REFRIGERANT LINES IN ATTIC SPACE AS MUCH AS POSSIBLE TO NEW UNITS. COORDINATE WITH THE GENERAL CONTRACTOR FOR THE REQUIRED DEMOLITION AND/OR REPAIR TO INSTALL THE NEW LINE SETS. SOME LINES/ROUTES/QTYS SHOWN ON PLANS ARE FOR CLARITY. FIELD VERIFY EXISTING CONDITIONS. SEE DETAILS AND SPECIFICATIONS FOR ADDITIONAL INFORMATION.
- 5 PROVIDE AND INSTALL NEW SMOKE DETECTOR IN BASE OF EXISTING PLENUM RETURN. SEE CONTROL SHEET FOR ADDITIONAL INFORMATION.
- 6 ROUTE THIS CONDENSATE DRAIN IN CONDITIONED CHAPEL FURRED SPACE. PROVIDE WET VENT CONNECTION TO SACRAMENT SINKS VENT. INSULATE DRAIN LINE IN THIS SPACE. SLOPE AT 1/8" IF NEEDED. FIELD VERIFY EXISTING CONDITIONS. SEE SPECIFICATIONS FOR ADDITIONAL INFORMATION.
- 7 INSTALL EACH NEW CONDENSING UNITS WITH A 36" CLEARANCE ON QTY (3) SIDES AND 18" ON QTY (1) SIDE FOR SERVICING. KEEP UNITS AWAY FROM DRIP EDGE OF ROOF. INSTALL UNITS ON TOP OF 1" VIBRATION ISOLATION PADS. SEE DETAILS.
- 8 EXISTING MINI SPLIT INDOOR AND OUTDOOR UNITS TO REMAIN.
- 9 PROVIDE AND INSTALL NEW SECURITY SYSTEM FOR ALL OUTDOOR CONDENSING UNITS. SEE SPECIFICATION 28-1644 FOR INSTALL INSTRUCTIONS.

**ELEC. PLAN NOTES:**

- A INSTALL NEW NEMA 3R PANEL FOR NEW CONDENSING UNITS. RUN CIRCUITS TO EACH UNIT. SEE PANEL SCHEDULE ON SHEET ME201. MAINTAIN 3' CLEARANCE IN FRONT OF PANEL.
- B RE-CONNECT EXISTING CIRCUITS TO NEW FURNACES WITH THERMAL SWITCH.
- C RE-INDEX LABELS AT EXISTING PANELS FOR NEW LOADS.
- D EXISTING GFCI RECEPTACLE TO REMAIN. INSTALL NEW IN-USE COVER.
- E RUN 2#8, 1#10 GND, 3/4" TO PANEL.
- F RUN 2#6, 1#10 GND, 3/4" TO PANEL.
- G INSTALL NEW EXTERIOR WALL PACK LED LIGHTS AS PER FIXTURE SCHEDULE ON SHEET ME201.

**CONTRACTOR OPTION:**

CONTRACTOR TO VERIFY EXISTING CONDITION OF REFRIGERANT PIPING. IF PIPING IS FOUND TO BE IN GOOD CONDITION WITH NO LEAKS, CONTRACTOR CAN RE-USE EXISTING PIPING INSTEAD OF INSTALLING NEW PIPING. IF EXISTING PIPING IS RE-USED, CONTRACTOR MUST CLEAN AND PURGE LINES USING RX-11 CLEANING KIT BEFORE NEW R410A REFRIGERANT IS INSTALLED AND NEW CONDENSING UNITS AND COILS CONNECTED. EXISTING LINES MUST HOLD PRESSURE AND DEMONSTRATE INTEGRITY THROUGH-OUT SYSTEM. CONTRACTOR SHALL VERIFY WITH THE SPECIFIC UNIT MANUFACTURE THAT THE EXISTING LINE SIZE & LENGTH WILL WORK FOR NEW UNIT.

Release Date:  
XXXXX

**P.C. ARCHITECTS INC.**  
 Dennis B. Patten, AIA  
 P.O. Box 217  
 St. George, UT 84771  
 (435) 673-6579

Stamp:

**MURRAY MEETINGHOUSE  
 HVAC REFURBISHING**  
 1705 NORTH MURRAY BLVD.  
 COLORADO SPRINGS, CO.

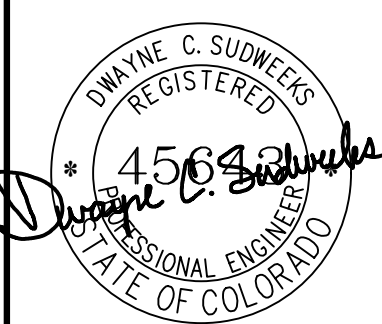
**THE CHURCH OF  
 JESUS CHRIST  
 OF LATTER-DAY SAINTS**

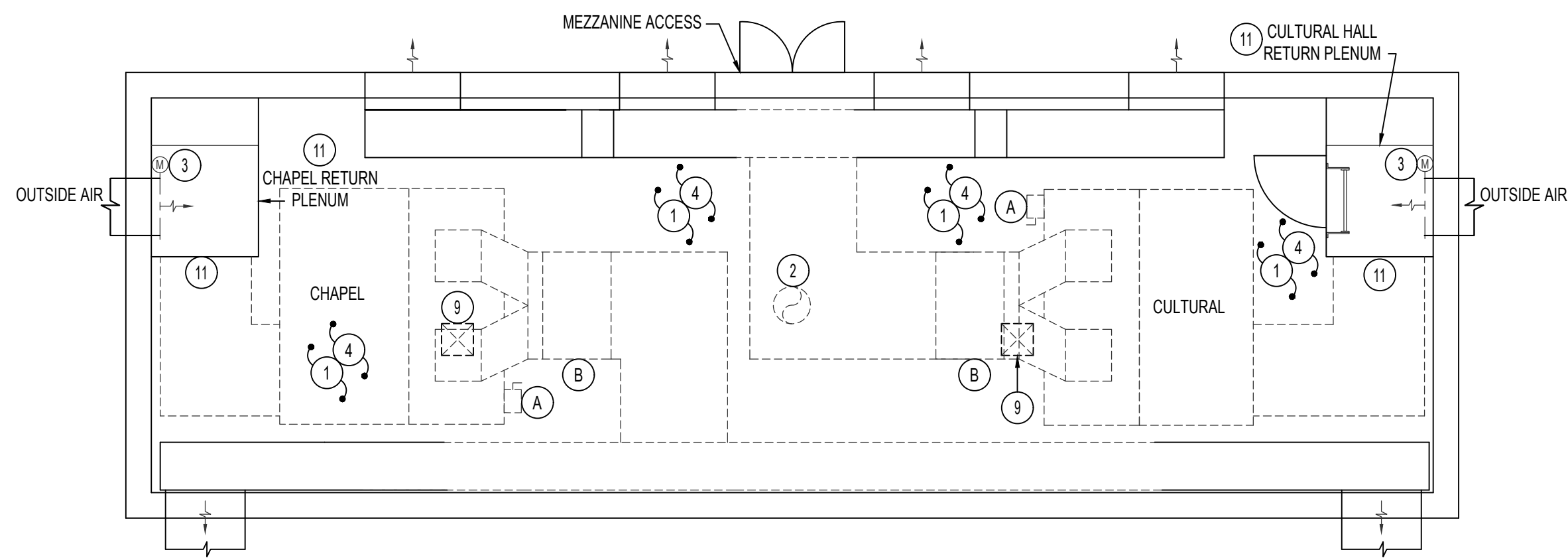
Mark	Date	Rev.	Description

Project Number:  
PCA-2325  
 Plan Series:

Property Number:  
503-4760-23020101  
 Sheet Title:  
**MECHANICAL FLOOR PLAN**

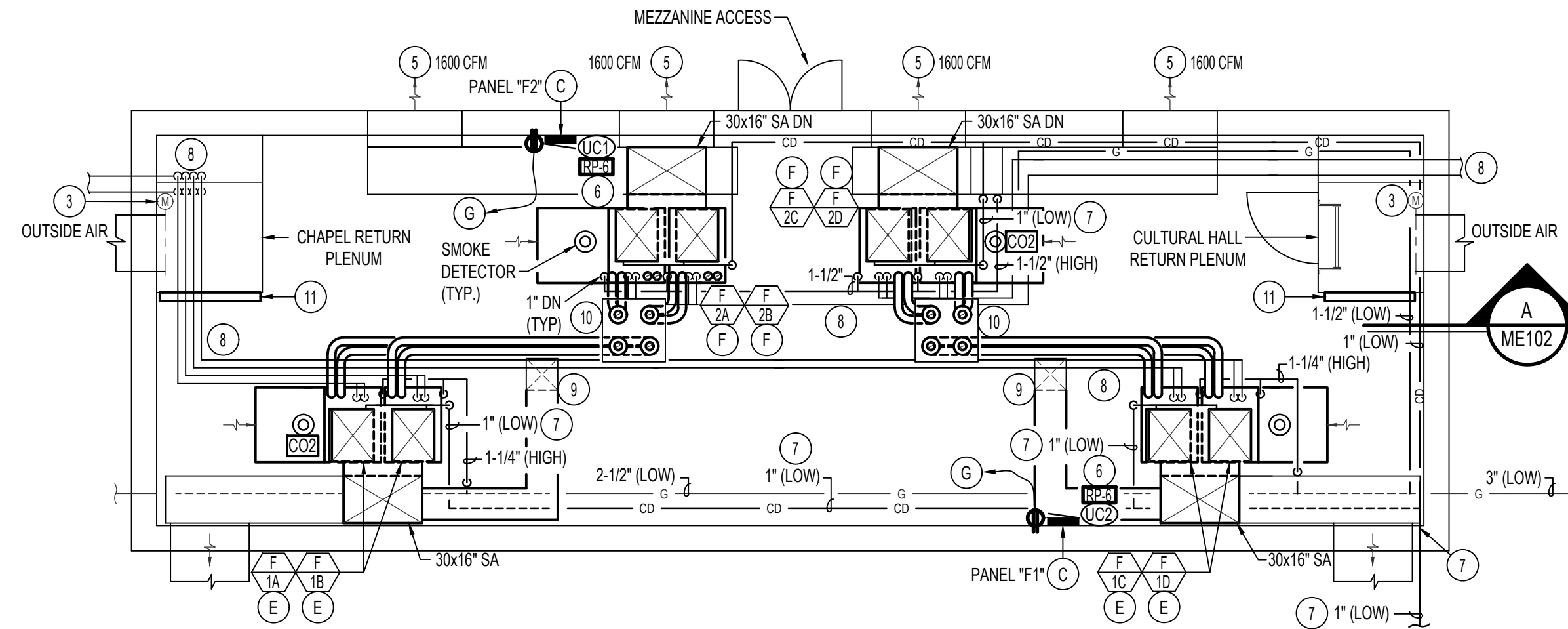
Sheet:  
**ME101**


  
**Engineered Systems Associates**  
 1355 EAST CENTER  
 POCA TELLO, IDAHO 83201  
 PHONE: (208) 233-0501  
 FAX: (208) 233-0529  
 EMAIL: esa@engsystems.com  
 ESA JOB NUMBER: 23051  
 May 23, 2023



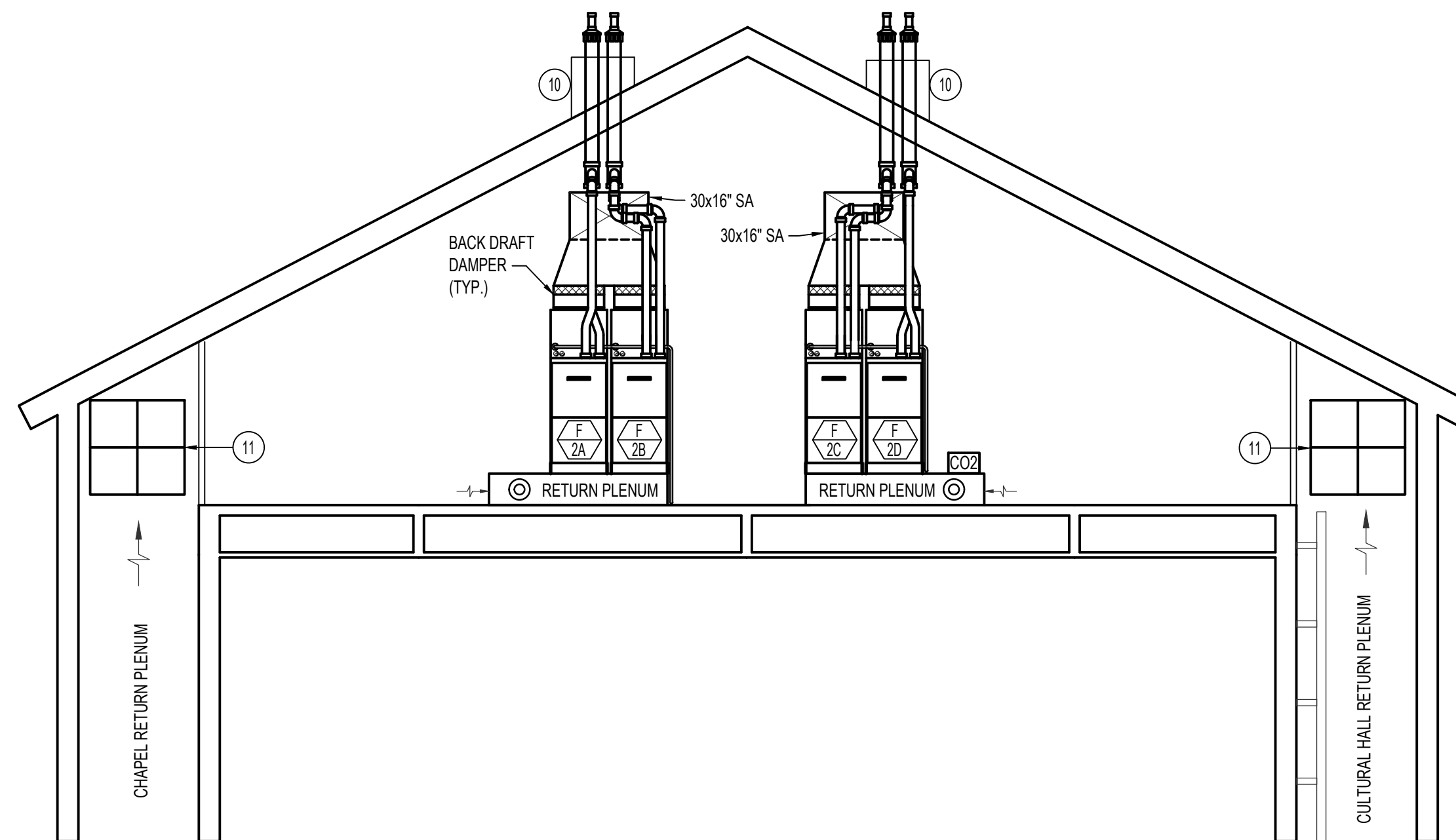
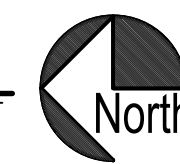
**MECHANICAL MEZZANINE DEMO FLOOR PLAN**

SCALE: 1/4" = 1'-0"



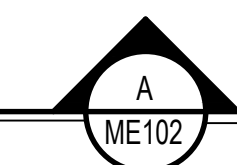
**MECHANICAL MEZZANINE FLOOR PLAN**

SCALE: 1/4" = 1'-0"



**BUILDING SECTION**

SCALE: 1/4" = 1'-0"



**MECHANICAL NOTES:**

- 1 REMOVE AND DISPOSE OF DUCT FURNACES, AIR HANDLERS, FANS, REFRIGERANT LINES, FLUES, DUCTWORK, COOLING COILS, FILTERS, MOUNTING, CONDENSATE DRAINS, AND BRANCH GAS LINES.
- 2 REMOVE EXISTING FLUE TERMINATION AND CAP AND SEAL WEATHER TIGHT.
- 3 EXISTING MOTORIZED DAMPER TO REMAIN REPLACE ACTUATOR WITH NEW.
- 4 ALL EXISTING & ACCESSIBLE REFRIGERANT LINES IN MEZZANINE SPACE TO BE REMOVED AND DISPOSED OF. CAP AND ABANDON IN WALL SPACE. SEE THIS SHEET FOR NEW REFRIGERANT LINES, SIZES, AND ROUTES.
- 5 BALANCE SIDEWALL DIFFUSER TO CFM AS INDICATED ON PLANS.
- 6 SEE CONTROL SHEETS FOR WIRING DIAGRAM. COORDINATE WITH MECHANICAL TO RUN CONDUIT WITH NEW REFRIGERANT LINES.
- 7 ROUTE NEW CONDENSATE DRAIN AWAY FROM FOOT TRAFFIC AS MUCH AS POSSIBLE. CORE DRILL WALL TO INSTALL NEW LINE. SEAL AIR TIGHT AFTER THE WORK IS COMPLETE. SEE SHEET ME101 FOR CONTINUATION.
- 8 REFRIGERANT LINES IN MEZZANINE SPACE TO BE ROUTED AS HIGH AS POSSIBLE. SEE DETAILS AND SPECIFICATIONS.
- 9 EXISTING DUCTS THRU FLOOR TO REMAIN. TIE NEW DUCTWORK TO EXISTING AS LOW AS POSSIBLE. FIELD VERIFY EXISTING CONDITIONS.
- 10 PROVIDE AND INSTALL 24x24" ROOF CURB AND INSTALL QTY (4) NEW CONCENTRIC FLUE THRU ROOF AS INDICATED ON PLANS.
- 11 EXISTING PLENUM WALL TO REMAIN. INSTALL NEW 2" FILTER BANK TO FILL-IN HOLE WHERE DUCTWORK HAS BEEN REMOVED.

**ELEC. PLAN NOTES:**

- A EXISTING STARTER/DISCONNECT TO BE REMOVED AND DISPOSED OF. REMOVE CONNECTION FROM EXISTING DISCONNECT TO AIR HANDLER. RE-USE EXISTING CONDUIT FOR NEW EQUIPMENT.
- B REMOVE ALL ASSOCIATED ELECTRICAL FROM EXISTING DUCT FURNACES. REMOVE CONDUIT BACK TO SOURCE.
- C NEW ELECTRICAL PANELS "F1" & "F2" RE-USE CONDUIT AND PULL NEW CONDUCTORS FROM EXISTING PANEL. SEE PANEL SCHEDULES "F1" AND "F2" ON SHEET ME201 FOR WIRE SIZE.
- E RUN 2#12, 1#12 GND, 1/2" C TO NEW PANEL "F1".
- F RUN 2#12, 1#12 GND, 1/2" C TO NEW PANEL "F2".
- G NEW 20A RECEPTACLE. RUN 2#12, 1#12 GND, 1/2" CONDUIT TO NEW PANEL AS SHOWN.

Release Date:  
XXXXX

**P.C. ARCHITECTS INC.**  
Dennis B. Patten, AIA  
P.O. Box 217  
St. George, UT 84771  
(435) 673-6579

Stamp:

Project Name:  
**MURRAY MEETINGHOUSE  
HVAC REFURBISHING**  
1705 NORTH MURRAY BLVD.  
COLORADO SPRINGS, CO.

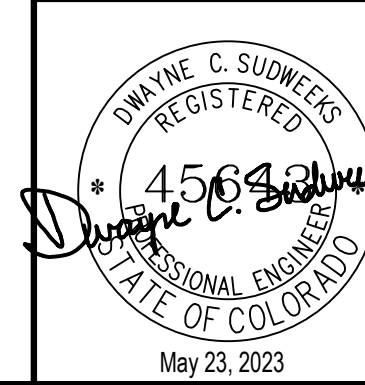
Project for:  
**THE CHURCH OF  
JESUS CHRIST  
OF LATTER-DAY SAINTS**

Mark	Date (m.y.)	Description

Project Number:  
**PCA-2325**  
Plan Series:

Property Number:  
**503-4760-23020101**  
Sheet Title:  
**MECHANICAL  
MEZZANINE  
FLOOR PLAN**

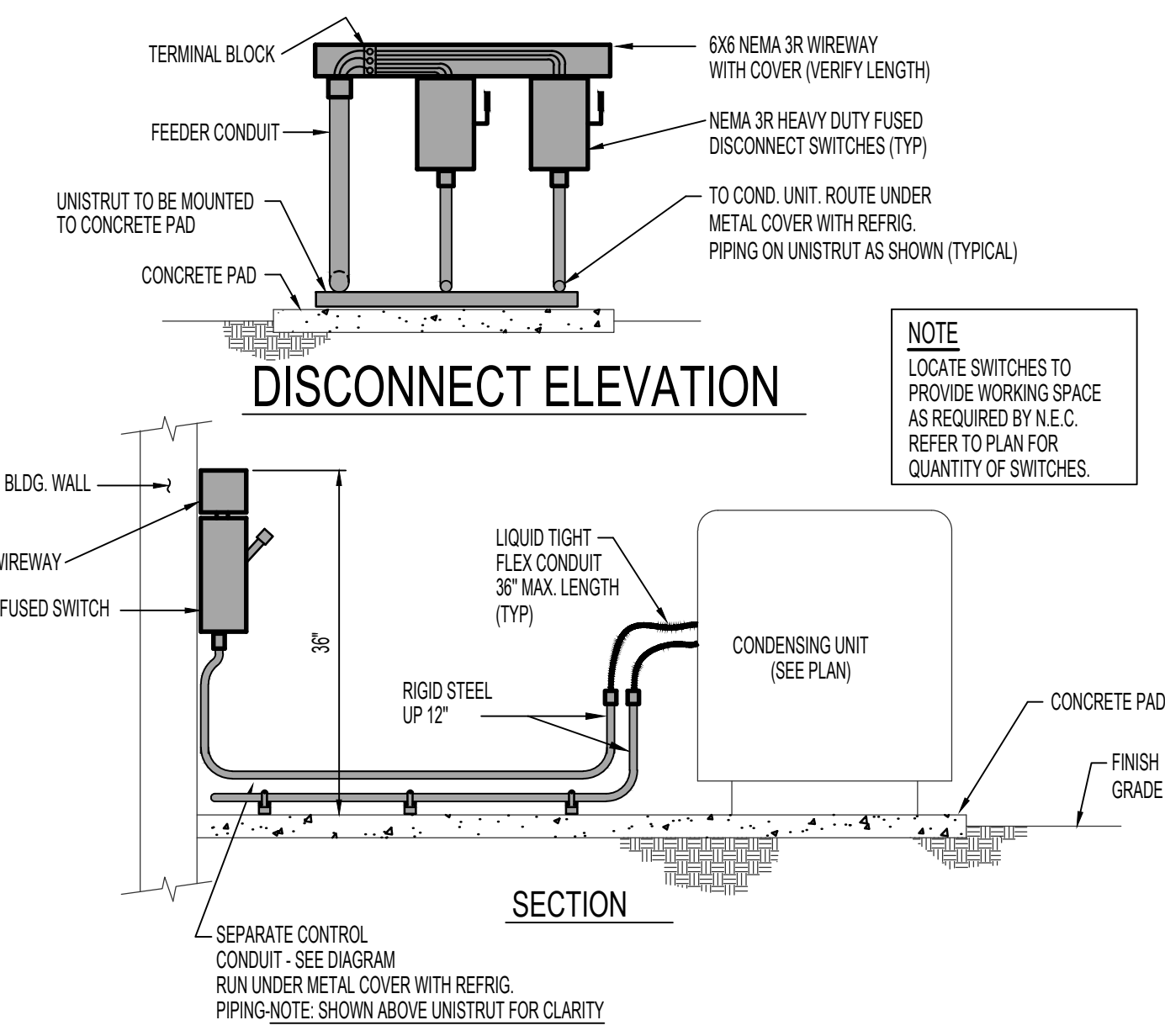
Sheet:  
**ME102**



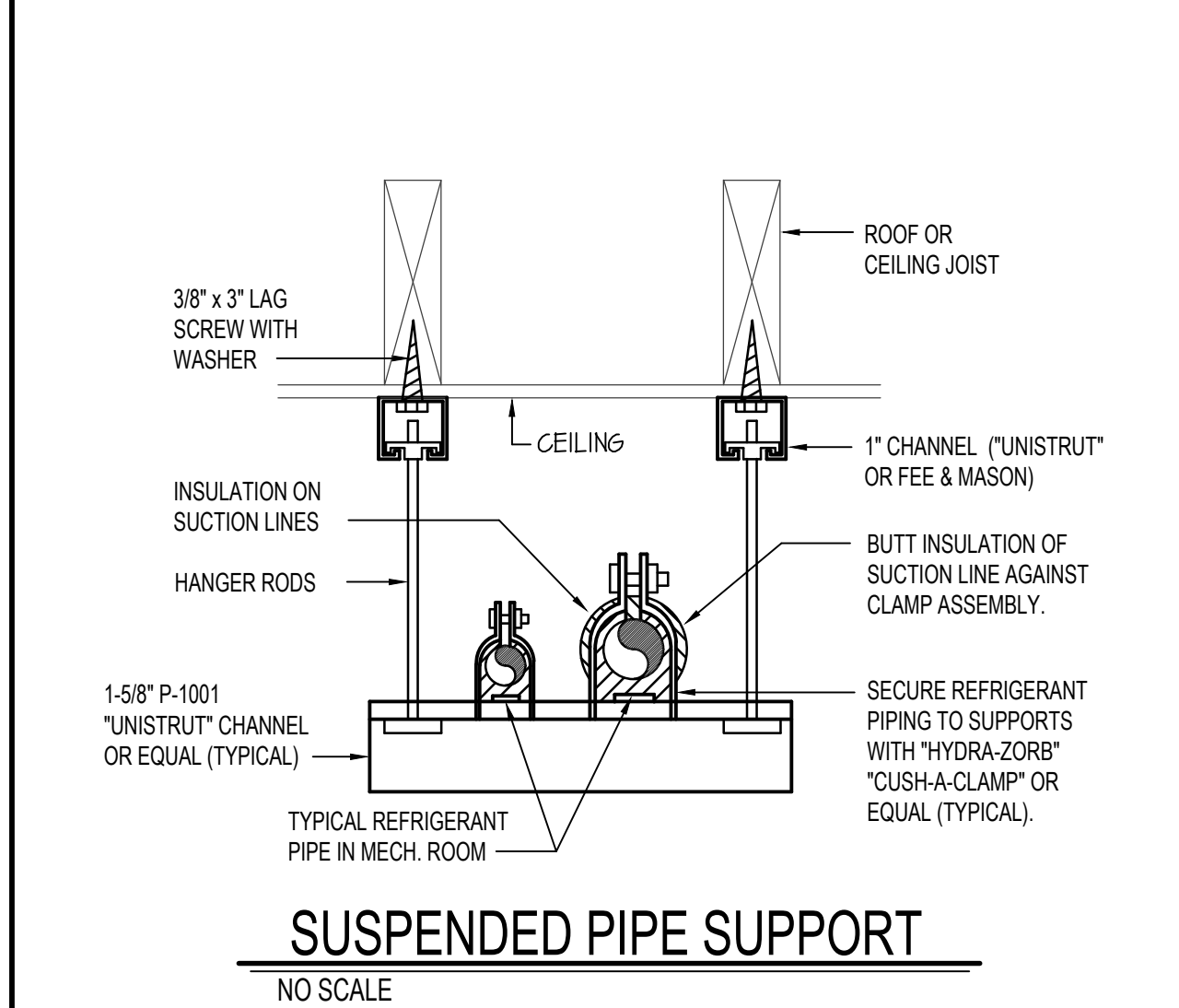
**Engineered  
Systems  
Associates**  
1355 EAST CENTER  
POCATELLO, IDAHO 83201  
PHONE: (208) 233-0501  
FAX: (208) 233-0529  
EMAIL: esa@engsystems.com  
ESA JOB NUMBER: 23051

May 23, 2023

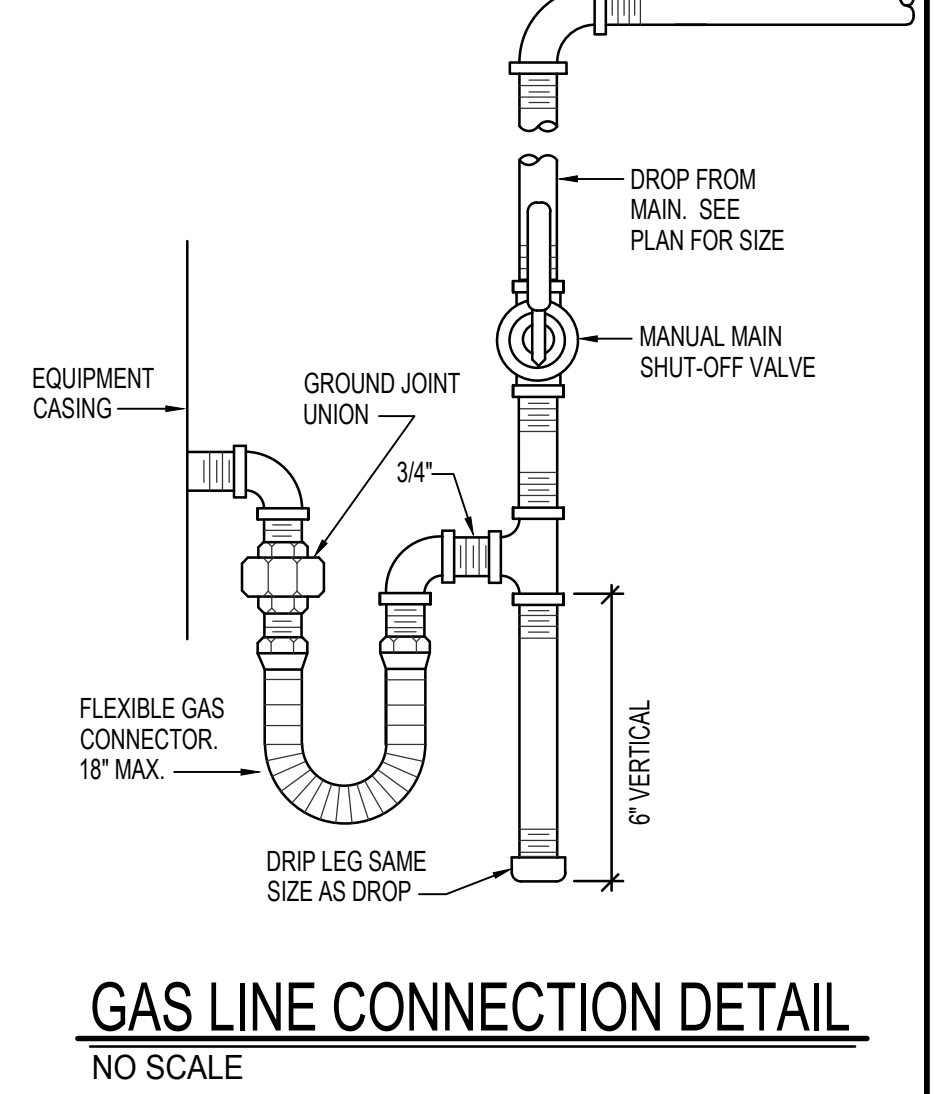




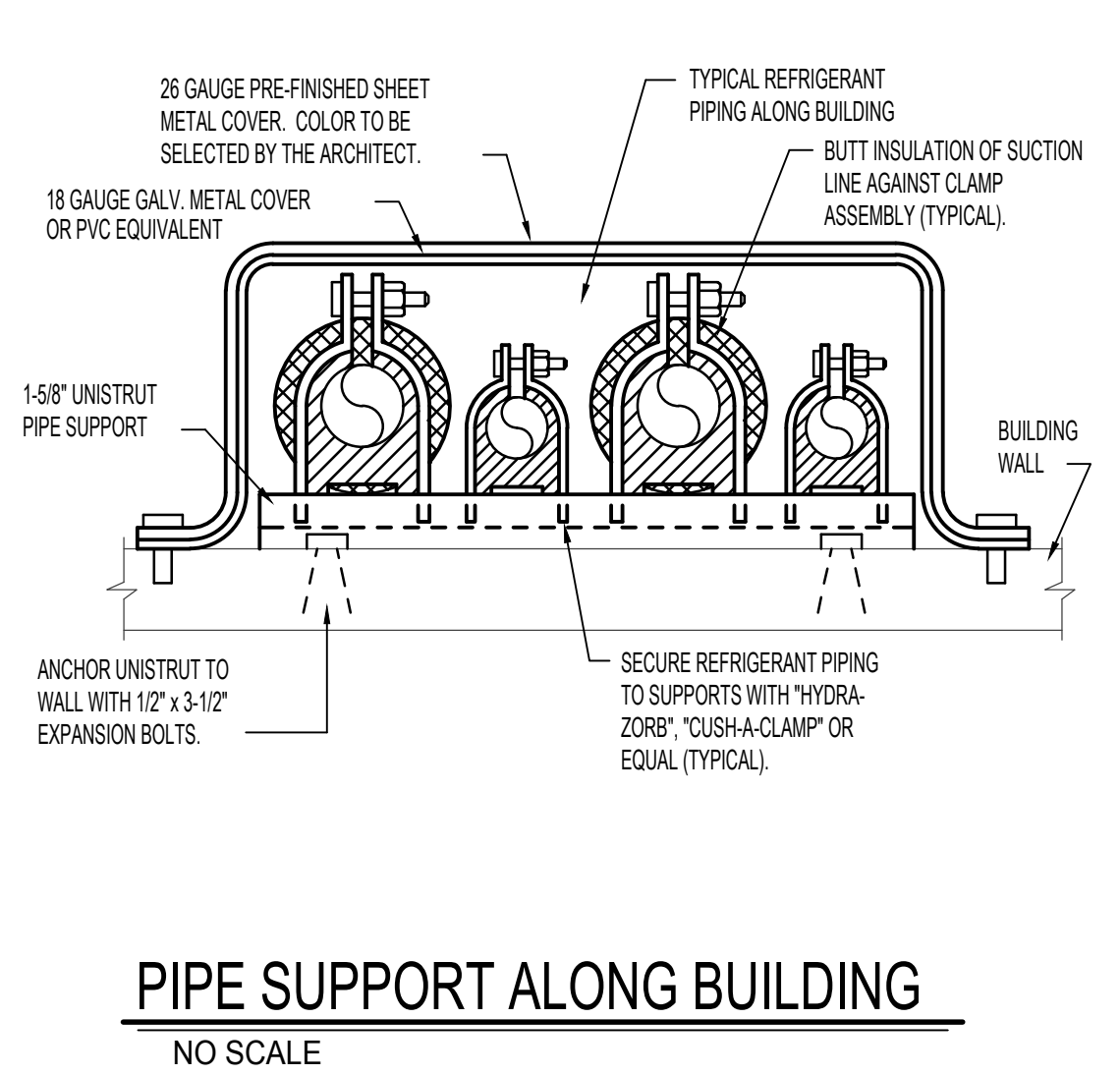
**CONDENSING UNIT - CONDUIT DIAGRAM**  
NO SCALE (ABOVE SLAB)



**SUSPENDED PIPE SUPPORT**  
NO SCALE



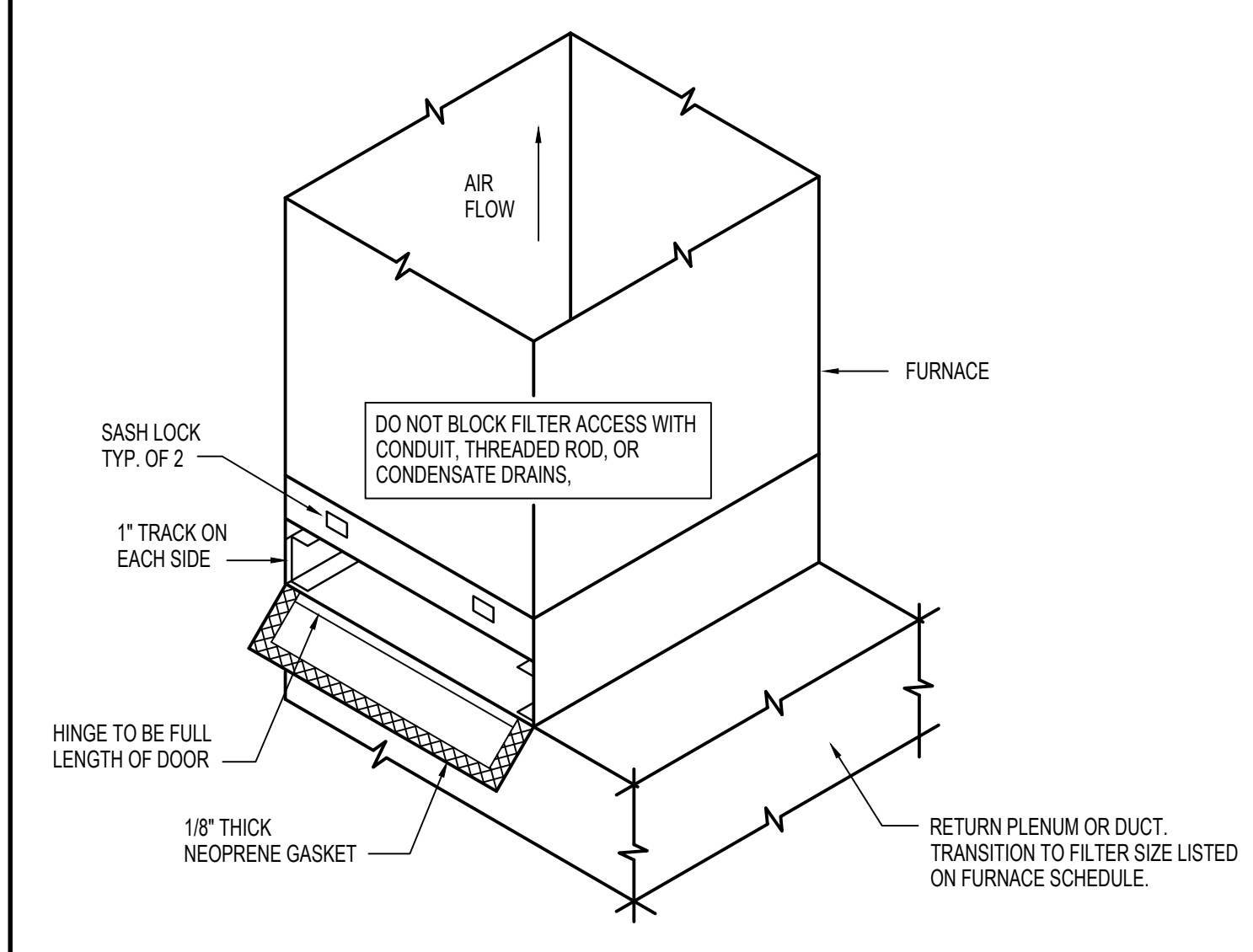
**GAS LINE CONNECTION DETAIL**  
NO SCALE



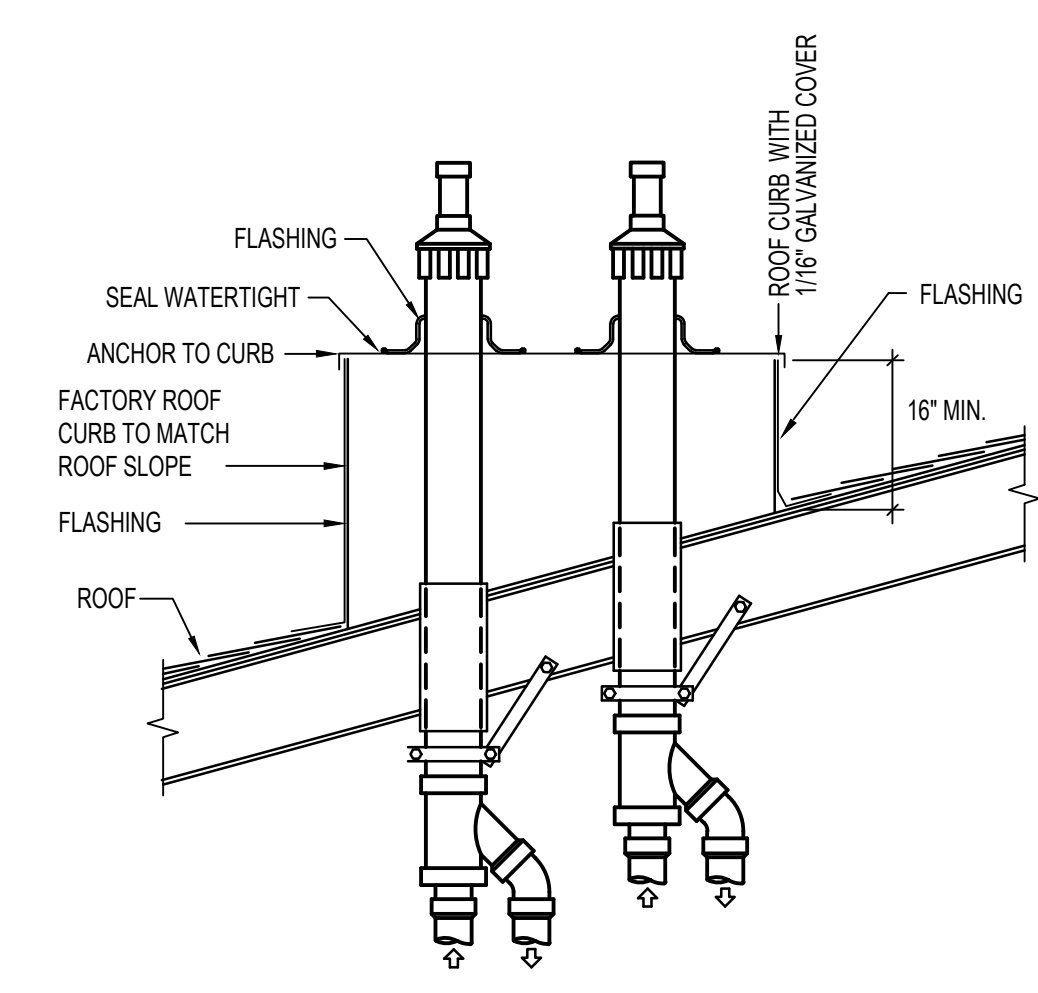
**PIPE SUPPORT ALONG BUILDING**  
NO SCALE

UNIT *	LIQUID	SUCTION
CC 1A	1/2"	7/8"
CC 1B	1/2"	7/8"
CC 1C	1/2"	7/8"
CC 2A	1/2"	7/8"
CC 2B	1/2"	7/8"
CC 2C	1/2"	7/8"
CC 3	3/8"	5/8"
CC 4	1/2"	7/8"
CC 5	1/2"	7/8"
CC 6	3/8"	5/8"
CC 7A	1/2"	7/8"
CC 7B	1/2"	7/8"

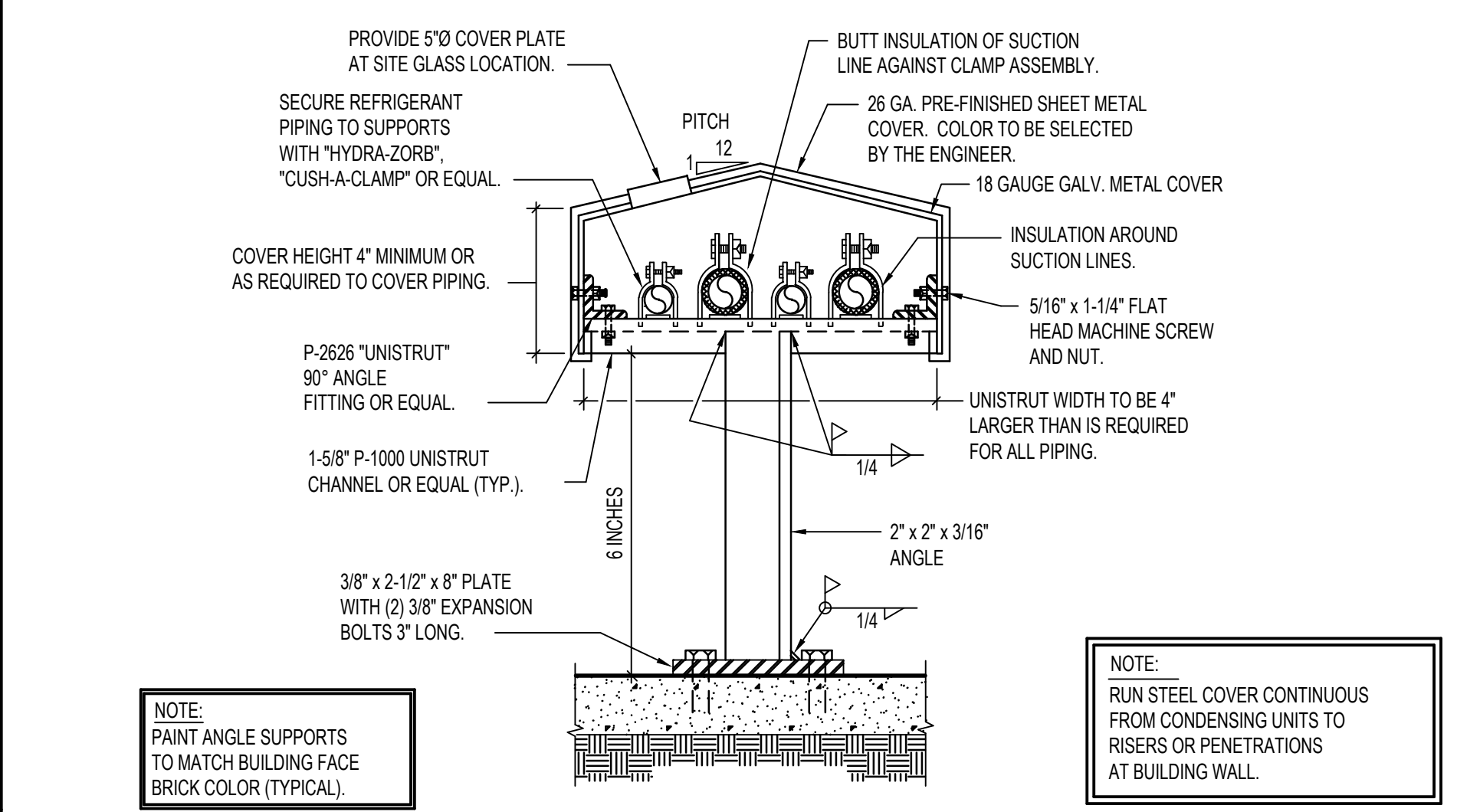
\*ADJUST REFRIGERANT SIZE BASED ON FIELD MEASUREMENTS, QUANTITY OF FITTINGS, AND MANUFACTURER RECOMMENDED SIZING CHARTS.



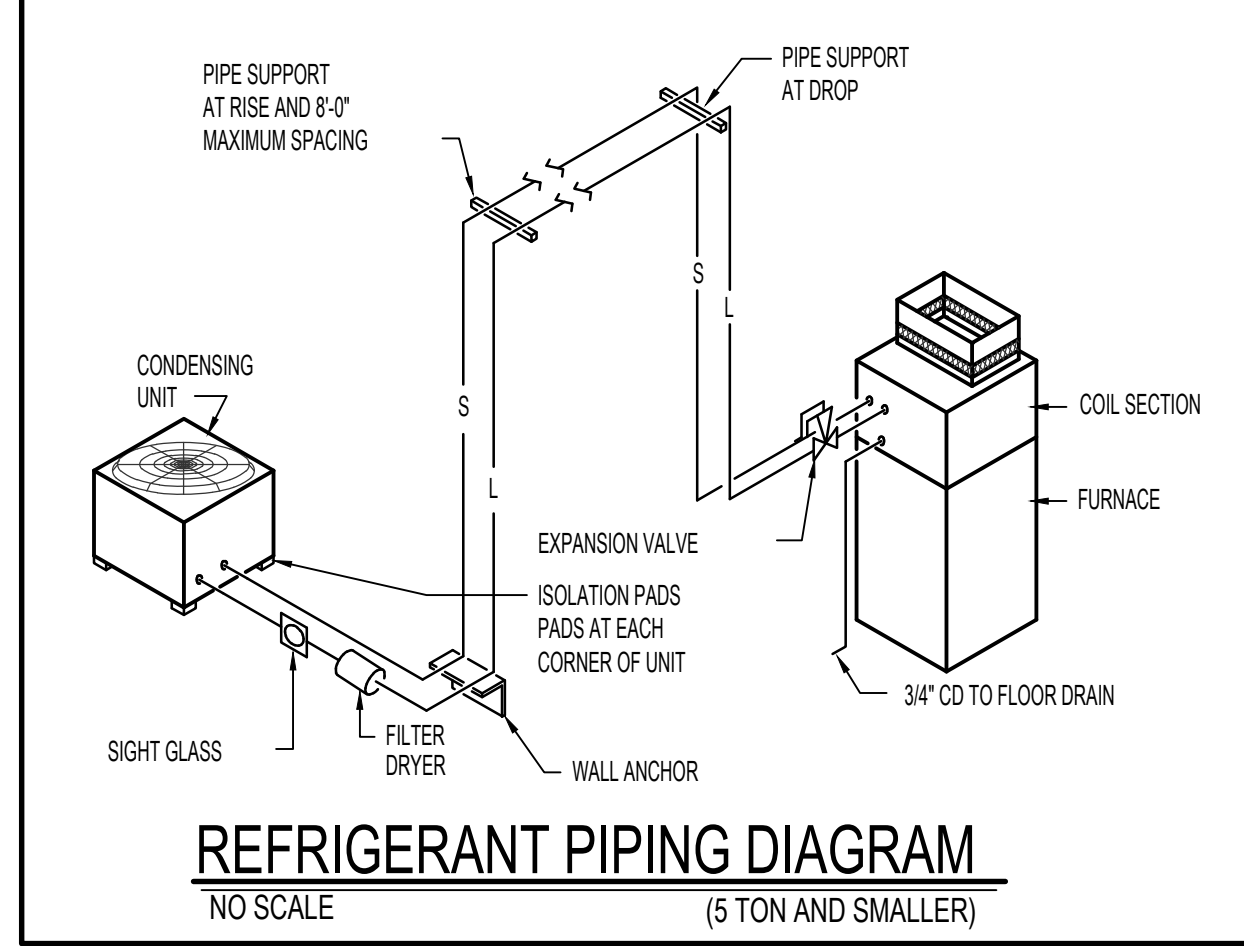
**EXTERNAL FILTER SECTION DETAIL**  
NO SCALE UP-FLOW CONFIGURATION



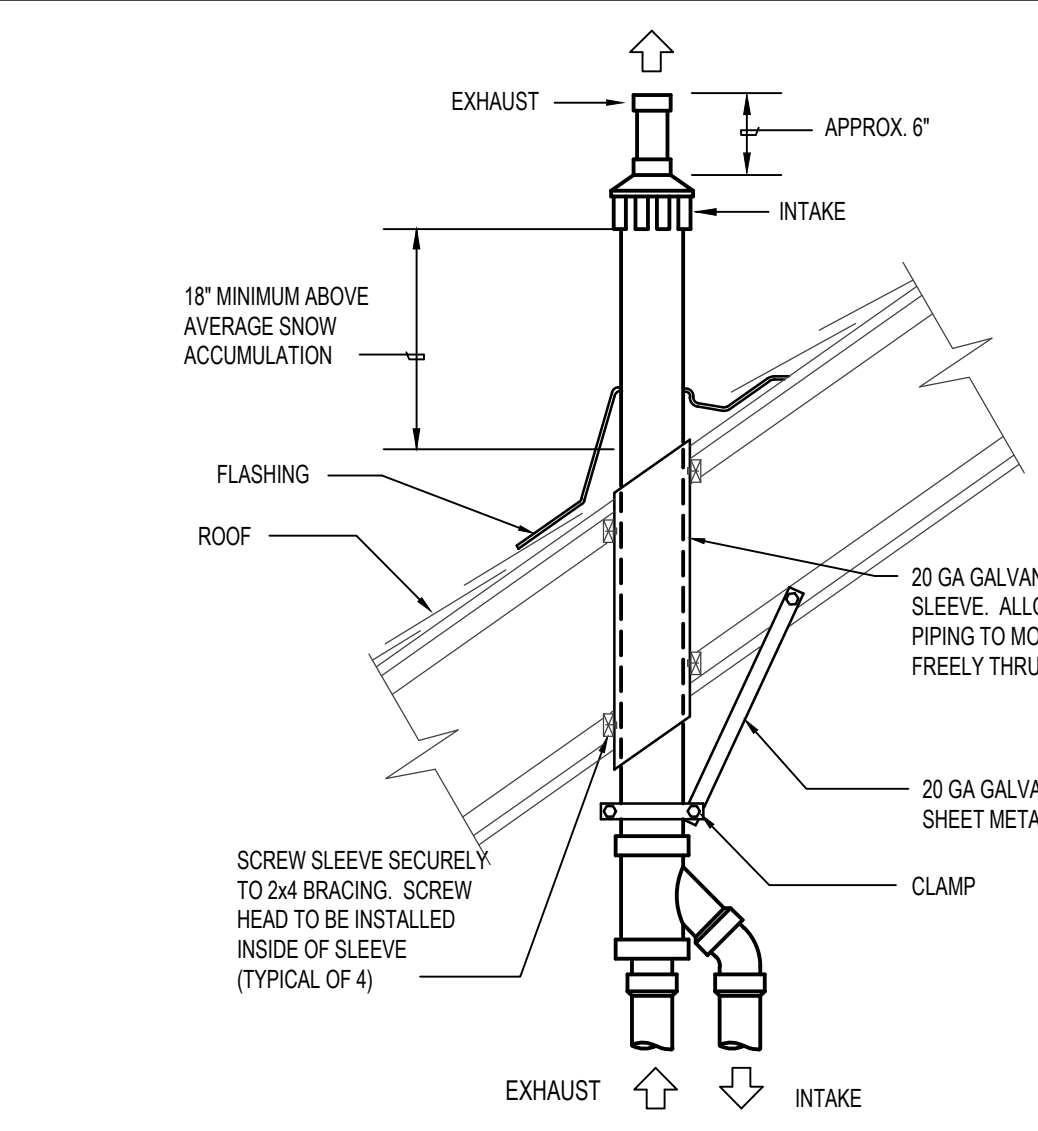
**CONCENTRIC FLUES THRU CURB**  
NO SCALE



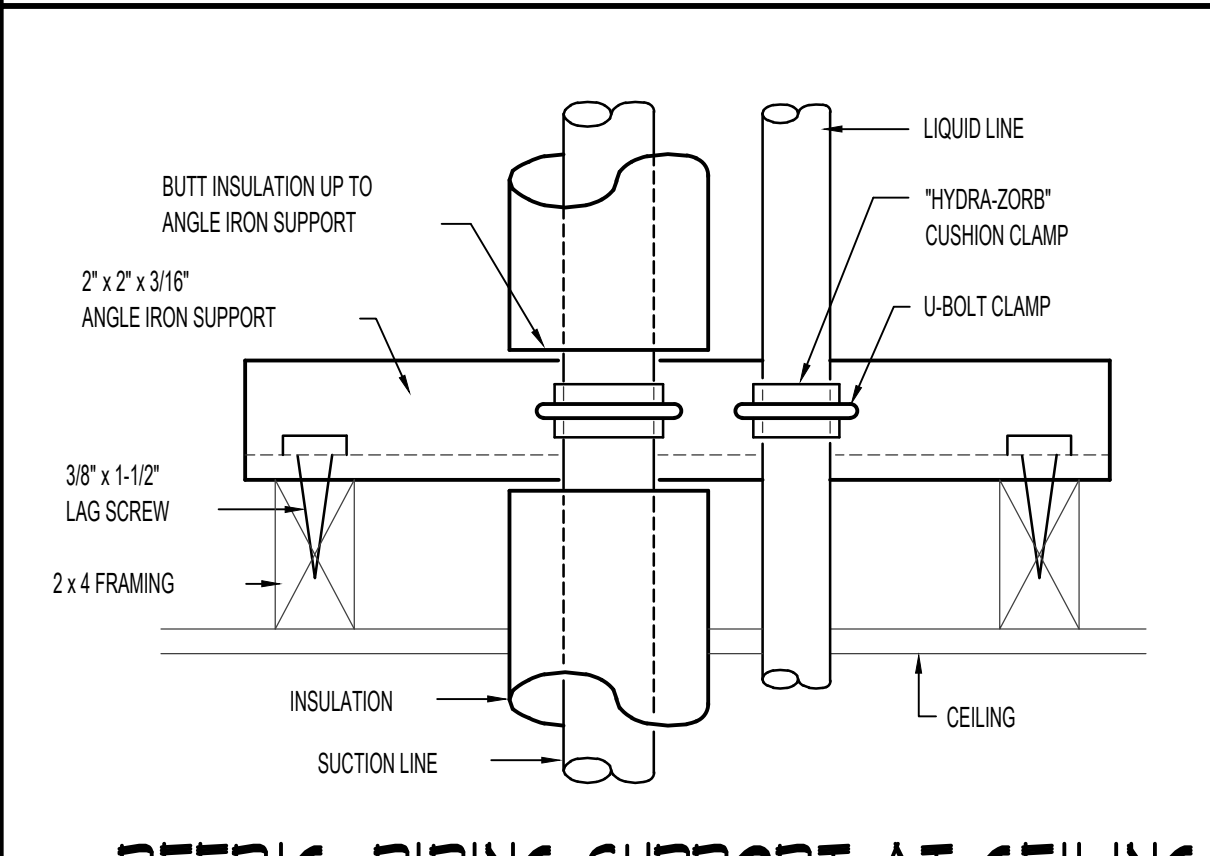
**REFRIGERANT PIPE SUPPORT DETAIL**  
NO SCALE



**REFRIGERANT PIPING DIAGRAM**  
NO SCALE (5 TON AND SMALLER)



**CONCENTRIC VENT TERMINATION DETAIL**  
NO SCALE



**REFRIG. PIPING SUPPORT AT CEILING**  
NO SCALE

Release Date:  
XXXXX  
**P.C. ARCHITECTS INC.**  
Dennis B. Patten, AIA  
P.O. Box 217  
St. George, UT 84771  
(435) 673-6579

Stamp:  
Project Name:  
**MURRAY MEETINGHOUSE HVAC REFURBISHING**  
1705 NORTH MURRAY BLVD.  
COLORADO SPRINGS, CO.

Project for:  
**THE CHURCH OF JESUS CHRIST OF LATTER-DAY SAINTS**

Mark	Date (m.y.y)	Description

Project Number:  
**PCA-2325**  
Plan Series:  
Property Number:  
**503-4760-23020101**

Sheet Title:  
**MECHANICAL DETAILS**

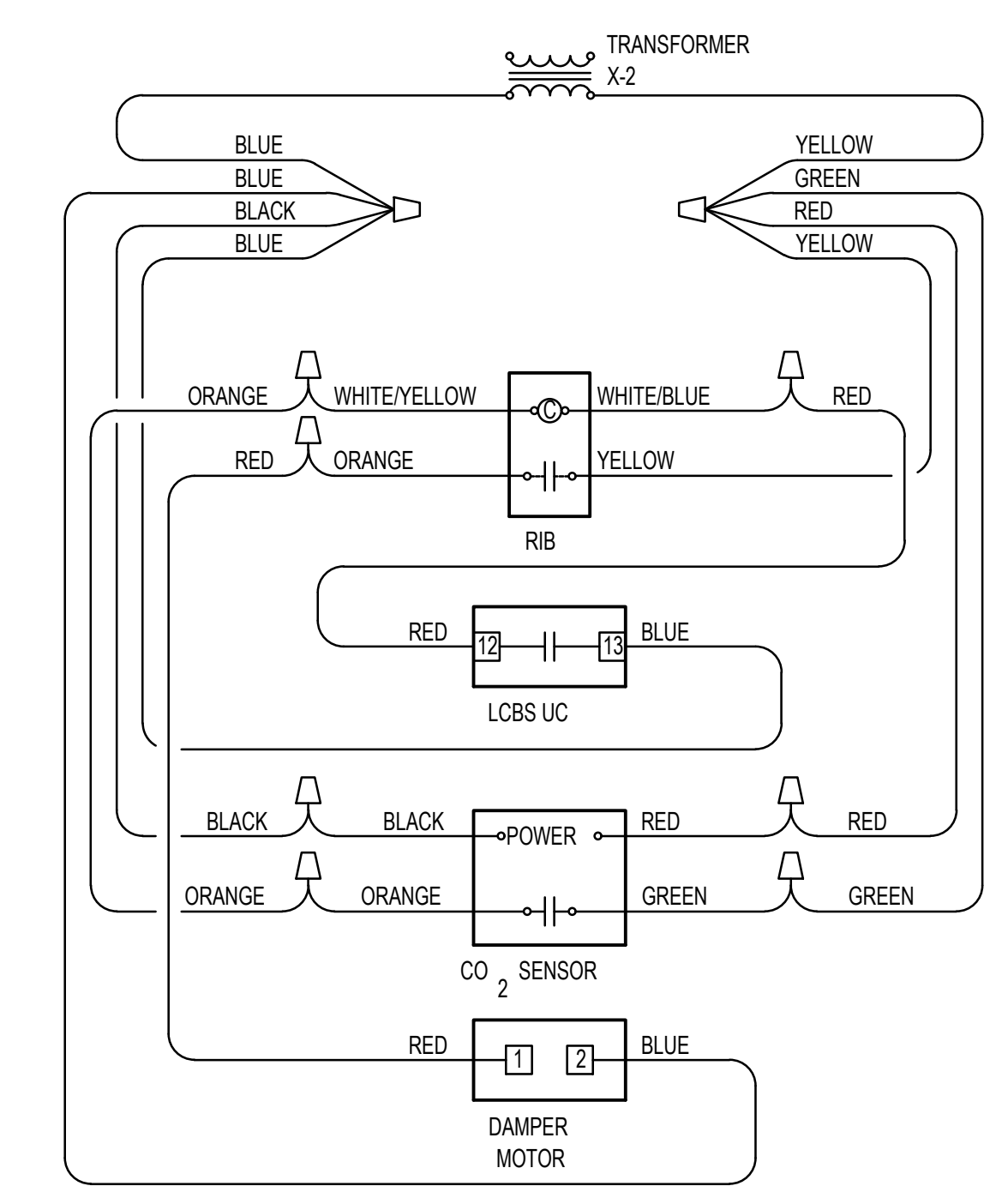
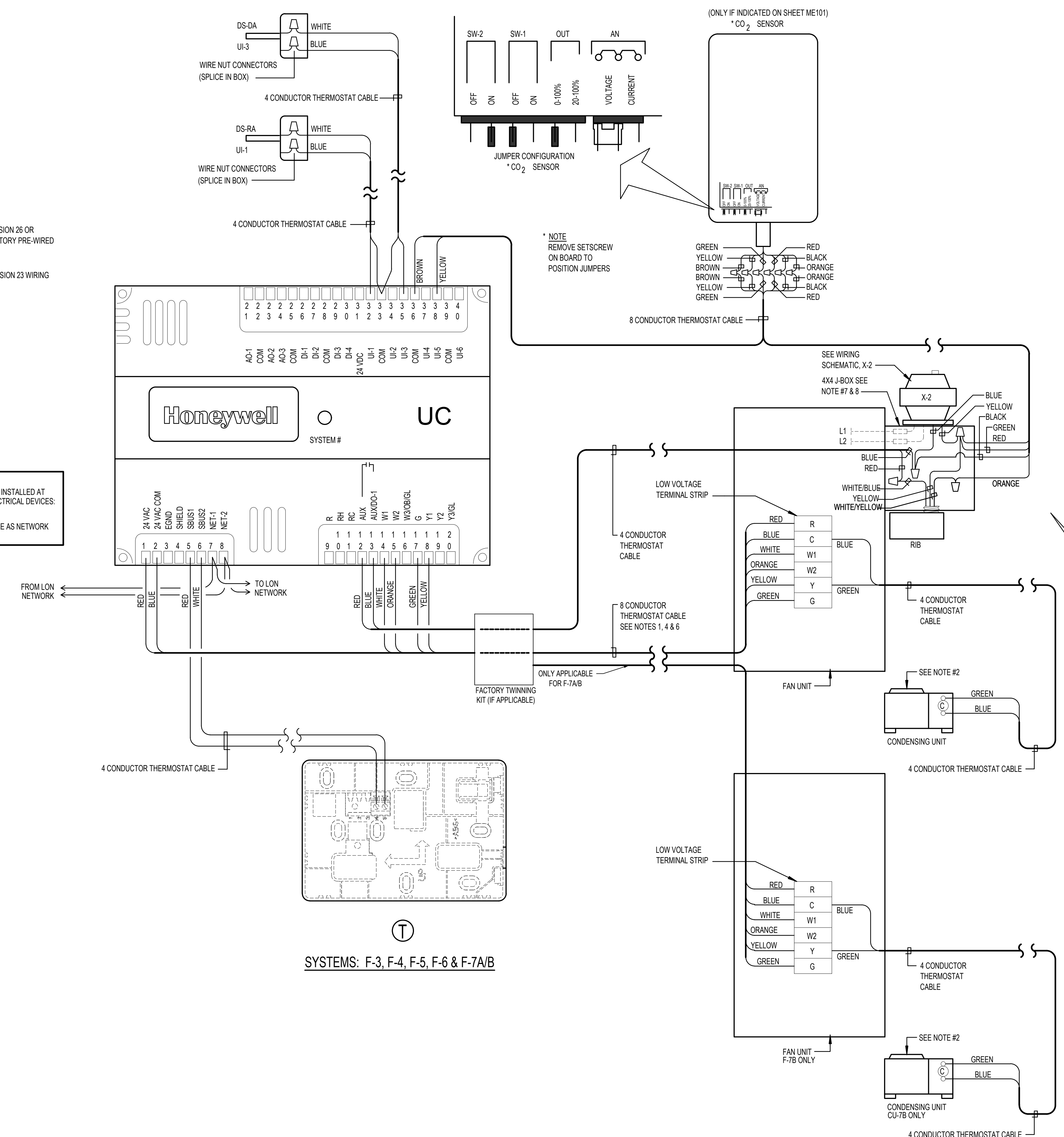
Sheet:  
**ME202**

**Engineered Systems Associates**  
1355 EAST CENTER  
POCATELLO, IDAHO 83201  
PHONE: (208) 233-0501  
FAX: (208) 233-0529  
EMAIL: esa@engsystems.com  
ESA JOB NUMBER: 23051

Professional Engineer  
*Dennis C. Swisher*  
4566  
MAY 23, 2023

**LEGEND:**  
 - - - - - DIVISION 26 OR FACTORY PRE-WIRED  
 \_\_\_\_\_ DIVISION 23 WIRING

**NOTES:**  
 1. ECHELON BUS (E-BUS) MUST BE INSTALLED AT LEAST 12" AWAY FROM ALL ELECTRICAL DEVICES, I.E. MOTORS, LIGHT, ETC.  
 2. DO NOT USE THERMOSTAT CABLE AS NETWORK CABLE. USE SPECIFIED CABLE.



- NOTES :**
1. THERMOSTAT CABLE- 4, 8 OR 12 CONDUCTOR- 18 AWG SOLID COPPER WIRE INSULATED WITH HIGH DENSITY POLYETHYLENE. CONDUCTORS PARALLEL. ENCLOSED IN BROWN PVC JACKET. (NO 22 AWG CABLE ALLOWED).
  2. IF COMPRESSOR UNITS HAVE THEIR OWN POWER SUPPLY IT MAY BE NECESSARY TO ADD ADDITIONAL RELAYS IN COMPRESSOR UNIT TO PROPERLY INTERFACE CONTROLS.
  3. USE WIRE NUT CONNECTORS FOR SPLICING CONDUCTORS IN SPECIFIED LOCATIONS. AND TYTON TYPE CRIMP CONNECTORS FOR TERMINAL CONNECTIONS. NO TERMINAL CONNECTORS REQUIRED AT THERMOSTAT OR SENSOR.
  4. DO NOT RUN ANY OTHER WIRING IN THIS CONDUIT EXCEPT THERMOSTAT CABLE.
  5. VERIFY THAT FAN UNIT FAN SPEED CONTROL WIRING IS SET TO MATCH SCHEDULE SHEET AND THAT FAN OPERATES AT COOLING SPEED ONLY.
  6. DO NOT SPLICE WIRE IN RUNS FROM SENSOR TO THERMOSTAT, THERMOSTAT TO FURNACE, AND THERMOSTAT TO DISCHARGE AIR SENSOR.
  7. PROVIDE CHASE NIPPLE WITH PLASTIC BUSHING WHEN ATTACHING J-BOX TO EQUIPMENT.
  8. PROVIDE CABLE-CLAMP SO THAT CABLES CANNOT BE PULLED OUT OF J-BOX.

**WIRING DIAGRAM**  
 SYSTEMS: F-3, F-4, F-5, F-6, F-7A/B

**Engineered Systems Associates**  
 1355 EAST CENTER  
 POCA TELLO, IDAHO 83201  
 PHONE: (208) 233-0501  
 FAX: (208) 233-0529  
 EMAIL: esa@engsystems.com  
 ESA JOB NUMBER: 23051

Professional Engineer  
 License No. 4563  
 State of Colorado  
 May 23, 2023

Release Date: XXXXX

**P.C. ARCHITECTS INC.**  
 Dennis B. Patten, AIA  
 P.O. Box 217  
 St. George, UT 84771  
 (435) 673-6579

Project Name: **MURRAY MEETINGHOUSE HVAC REFURBISHING**  
 1705 NORTH MURRAY BLVD.  
 COLORADO SPRINGS, CO.

Project for: **THE CHURCH OF JESUS CHRIST OF LATTER-DAY SAINTS**

Project Number: PCA-2325  
 Plan Series:  
 Property Number: 503-4760-23020101

Sheet Title: **CONTROLS**

Sheet: **ME301**

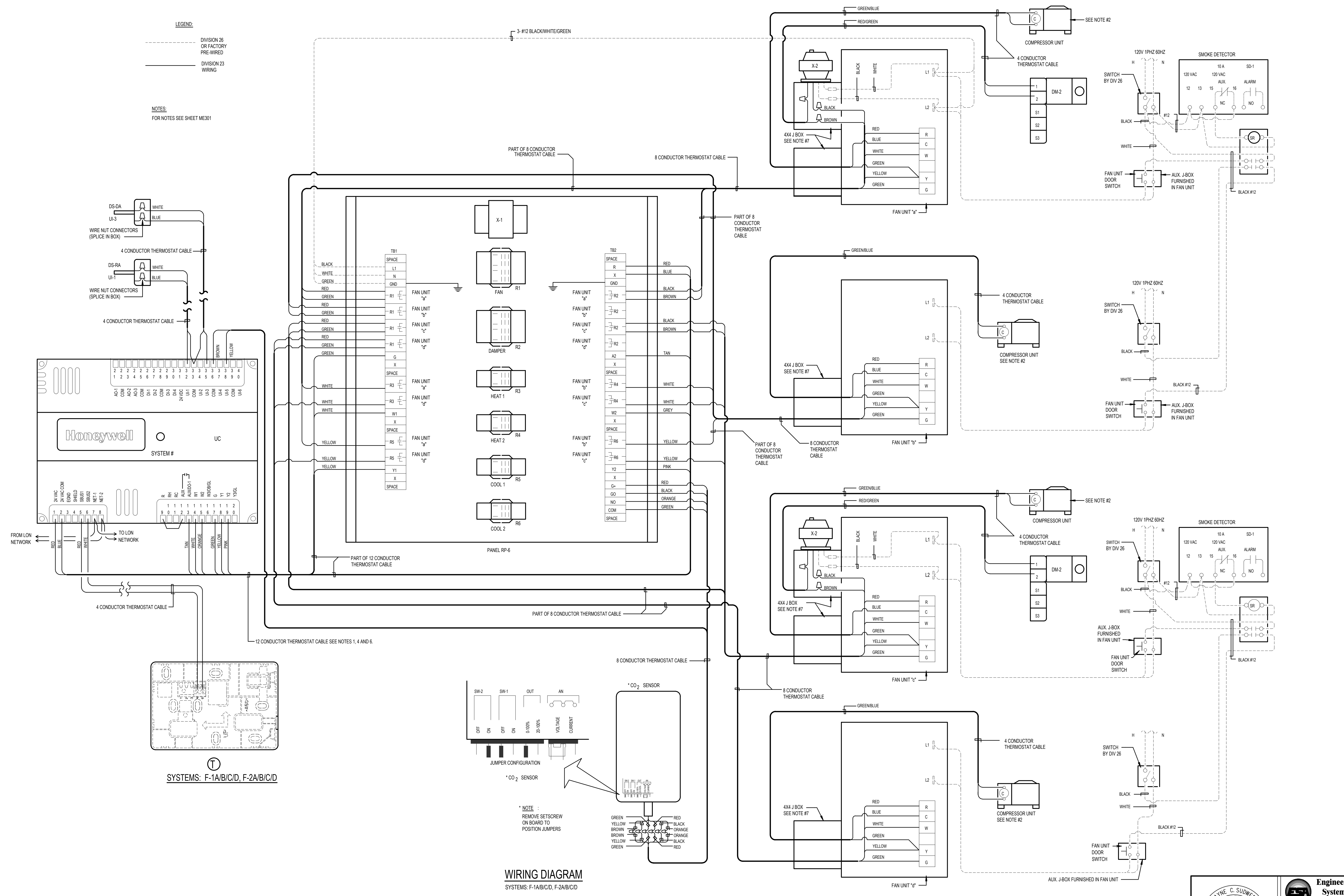
Mark	Date	Description

Project Number:  
**PCA-2325**  
Plan Series:

Property Number:  
**503-4760-23020101**

Sheet Title:  
**CONTROLS**

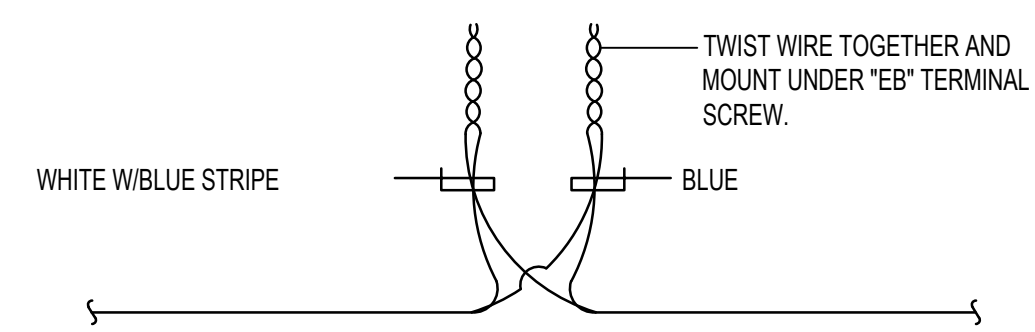
Sheet:  
**ME302**



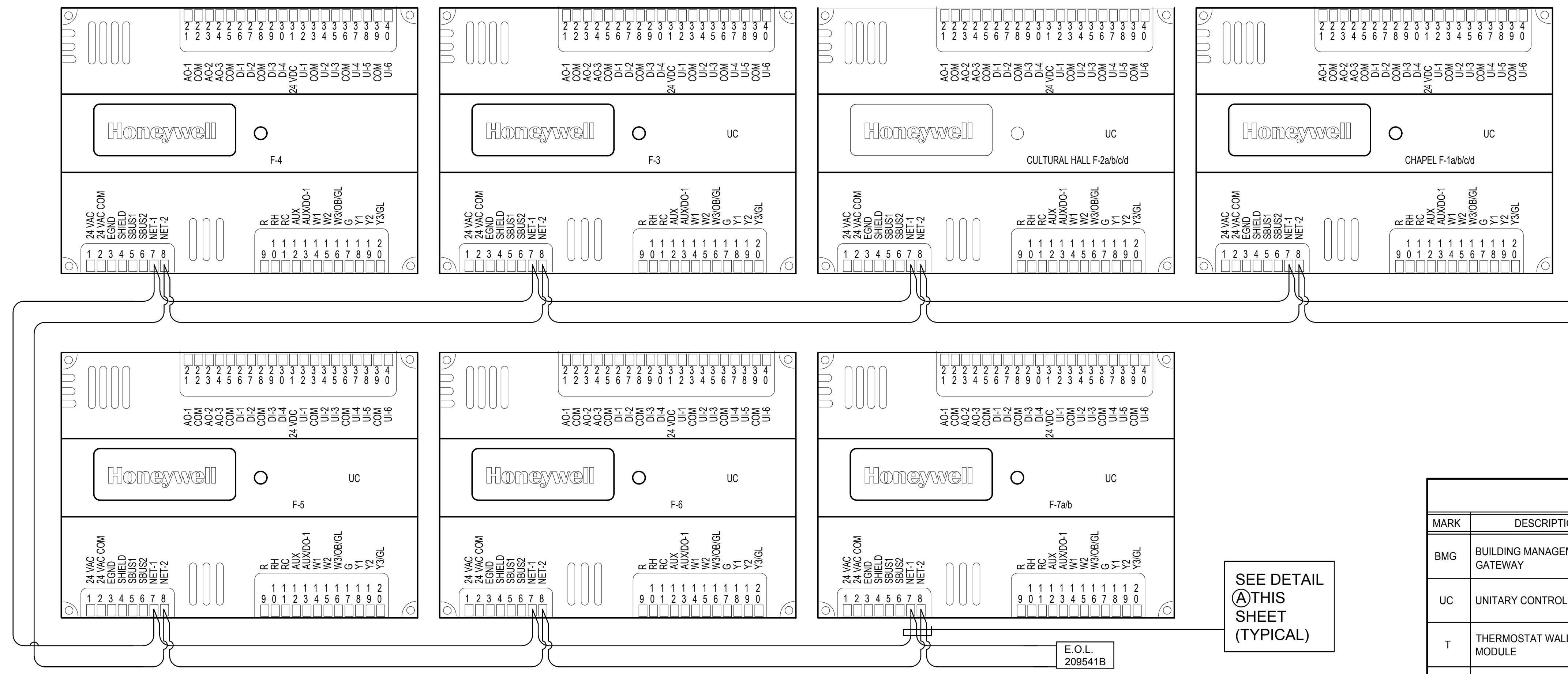
**Engineered Systems Associates**  
1355 EAST CENTER  
POCATELLO, IDAHO 83201  
PHONE: (208) 233-0501  
FAX: (208) 233-0529  
EMAIL: esa@engsystems.com  
ESA JOB NUMBER: 23051

Professional Engineer Seal: *Donny C. Sweeney*  
DONNY C. SWEENEY  
REGISTERED PROFESSIONAL ENGINEER  
STATE OF COLORADO

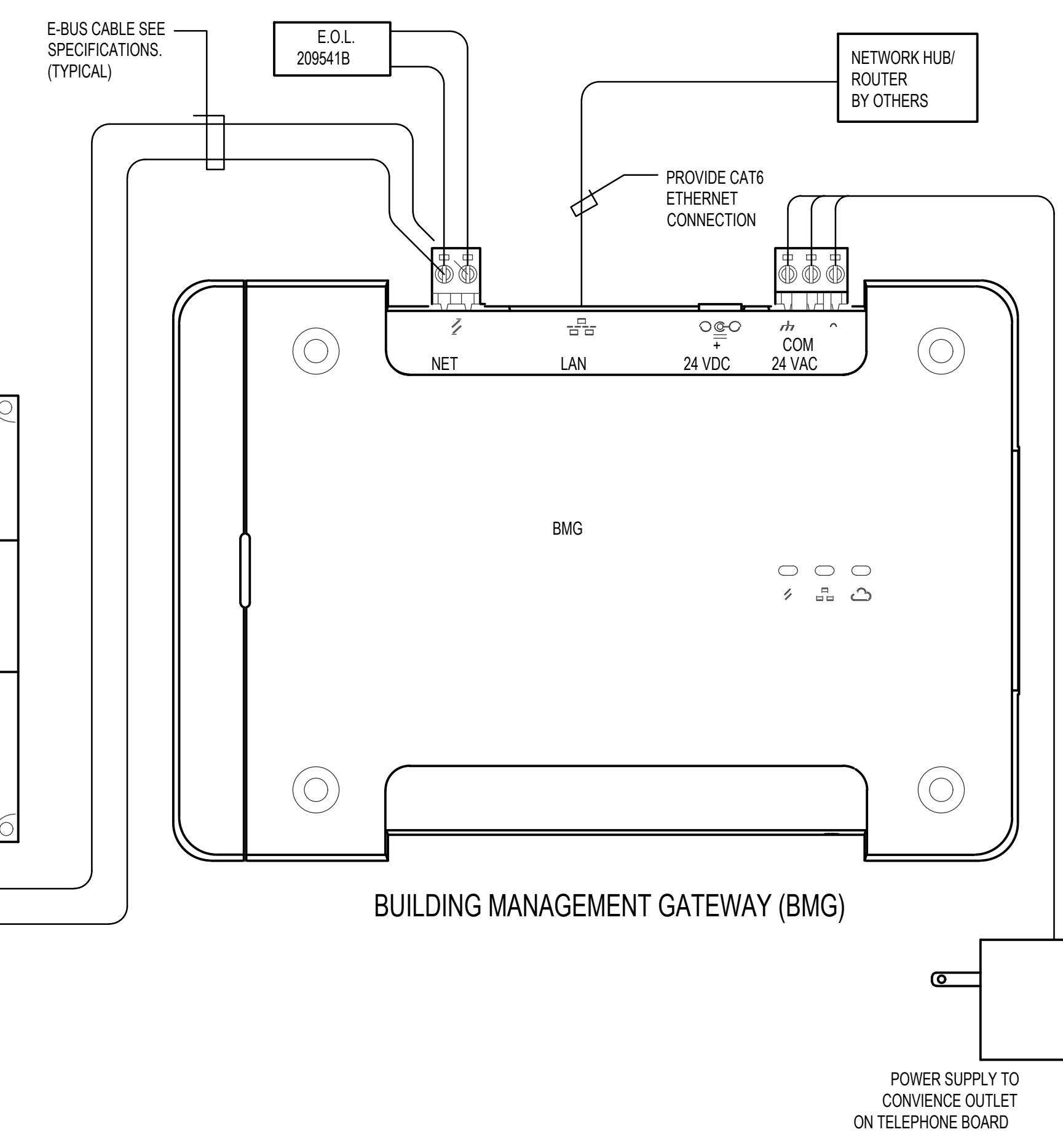
May 23, 2023



**A E-BUS CONNECTION DETAIL**  
NO SCALE



SEE DETAIL  
**(A)** THIS SHEET (TYPICAL)



CONTROL EQUIPMENT					
MARK	DESCRIPTION	CAT. NO. (1)	MARK	DESCRIPTION	CAT. NO. (1)
BMG	BUILDING MANAGEMENT GATEWAY	LGW1000 (GATEWAY) WPM-8000 (WALL PLUG)	RP-6	RELAY PANEL 24X18X6W/COVER	(2) (4)
UC	UNITARY CONTROLLER	YCLR64385R1000	DM-1	DAMPER MOTOR TWO POSITION	MS8105A1030
T	THERMOSTAT WALL MODULE	LCBS WALL MODULE	DM-2	DAMPER MOTOR 2 POS W/END SWITCH	MS8105A1130
	THERMOSTAT COVER PLATE ASSEMBLY	50002883-001	X-1	TRANSFORMER 120, 208, 240V/24V 75VA	AT175F1023
S	REMOTE SENSOR	TR40	X-2	TRANSFORMER 120V/24V 50VA	AT150F1022
G-1	THERMOSTAT GUARD	(2)	SD-1	DUCT SMOKE DETECTOR	(2)
DS	DUCT AIR SENSOR	C7041B2005	SR	SMOKE RELAY 30 AMP 120V COIL	DP2030B5003 (3)
CO 2	CO 2 SENSOR	C7232B1006	RIB	TWO POLE RELAY	RIBU1C (2)
OAS	GLOBAL OUTDOOR AIR SENSOR	C7041F2006 (6)	E-BUS	ECHOLON NETWORK CABLE	W221P-2001B

- (1) ALL CATALOG NUMBERS SHOWN ARE HONEYWELL UNLESS NOTED OTHERWISE.
- (2) SEE SPECIFICATIONS
- (3) PROVIDE ENCLOSURE
- (4) TO BE PURCHASED FROM AN APPROVED PER-BUILT PANEL BUILDER SEE SPECIFICATION.
- (5) SEE PLAN FOR REQUIRED SIZE AND ZONE NUMBER.
- (6) ONLY ONE REQUIRED FOR BUILDING. MAY BE CONNECTED TO ANY CONTROLLER AT NORTH SIDE.

Release Date: XXXXX

**P.C. ARCHITECTS INC.**  
Dennis B. Patten, AIA  
P.O. Box 217  
St. George, UT 84771  
(435) 673-6579

Project Name: **MURRAY MEETINGHOUSE HVAC REFURBISHING**  
1705 NORTH MURRAY BLVD.  
COLORADO SPRINGS, CO.

Project for: **THE CHURCH OF JESUS CHRIST OF LATTER-DAY SAINTS**

Mark	Date (m.y.y)	Description

Project Number: PCA-2325  
Plan Series:  
Property Number: 503-4760-23020101  
Sheet Title: **CONTROLS**

Sheet: **ME303**

**Engineered Systems Associates**  
1355 EAST CENTER  
POCATELLO, IDAHO 83201  
PHONE: (208) 233-0501  
FAX: (208) 233-0529  
EMAIL: esa@engsystems.com  
ESA JOB NUMBER: 23051

Professional Engineer  
State of Colorado  
No. 4563  
Date: May 23, 2023